

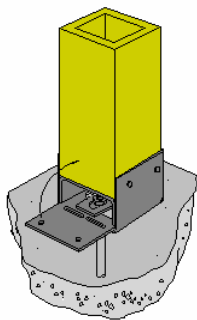
Handling and Installation Instructions

Storage and Handling

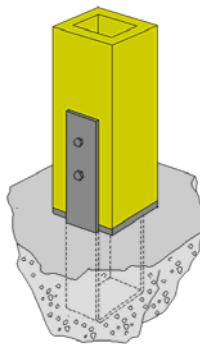
- Place the first set of stickers on a level dry surface. Material should be supported 12" above the ground to allow for free air movement and to prevent contact with ground moisture.
- Space stickers a maximum of 6' apart. Stack stickers directly above one another. Maximum storage height of 10' is recommended.
- All post ends are factory sealed to prevent water damage. Trimmed material will require end sealing with an alkyd-oil primer or equivalent
- Material wrap is slippery when wet or frozen, to prevent injury do not allow workers to walk on bundles.
- Store all products wrapped in the original wrapping.
- Do not re-wrap wet material.

Installation

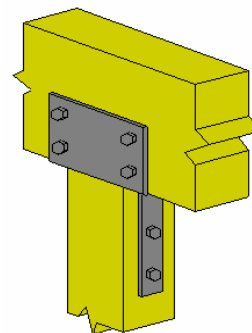
Raised Base Connection



Column Base Connection



Column Cap Connection



- Column bases and Column caps are required when the column has been designed for use in an uplift application. Simpson Strong Tie products or equal are to be used. Refer to the manufacturers instructions for capacities and connector attachment.
- For vertical load only applications a nailed connection can be implemented. Toe-nail the column to the supporting structure as follows:
 - 6x6 Columns 1-8d x 2½" nail per column face for a total of 4 nails at the bottom and 4 nails at the top.
 - 8x8 Columns 2-8d x 2½" nails per column face for a total of 8 nails at the bottom and 8 nails at the top.
- Where the column is in close contact with the foundation or soil a column base is to be used to raise the column a minimum of 1" above the foundation or 6" above the soil.
- It is recommended that all connector holes be pre-drilled.
- Through-bolting is not permitted on structural connections on QuattroPost. Pilot holes are required for lag screws, and the maximum permitted lag screw diameter is ½".
- Nail and screw connection shall be designed in accordance with section 10 of CSA O86.1 – 2002 using the equivalent sawn wood or glulam species.
- Notching of load bearing QuattroPost is permitted with approval from Synergy Pacific.
- QuattroPost products are manufactured using SPF, Douglas Fir or Western Red Cedar material.
- Hole sizes shall be limited to ⅝" diameter for 4x4 posts and ¾" diameter for 6x6 and 8x8 posts. Holes shall be centered on the post and spaced vertically at least 8" apart for multiple holes. Holes in addition to those required for installation of approved column caps and bases are not permitted within 8" of the top or bottom of the post.
- To ensure lasting durability and to prevent moisture damage QuattroPost is to be stained or primed with an exterior alkyd-oil primer and then top-coated with a 100% acrylic latex exterior coating. Where a clear finish is desired an exterior grade polyurethane product shall be used.
- QuattroPost is manufactured using Phenol Resorcinol Resin Adhesive as per CSA O112.7 and it is intended for use in dry and wet service conditions.
- It is the responsibility of the building/designer to ensure that all building codes and local jurisdiction requirements are met.
- Contact Synergy Pacific for all other technical and installation inquiries.